

44/193

# BOCA WOODS COUNTRY CLUB PHASE 3B

**NOTES**

THERE SHALL BE NO BUILDINGS OR ANY KIND OF CONSTRUCTION OR TREES OR SHRUBS PLACED ON DRAINAGE OR UTILITY EASEMENTS.

BEARINGS REFER TO THE STATE PLANE GRID AZIMUTH DATUM AS DETERMINED BY THE PALM BEACH COUNTY SURVEY DEPARTMENT.

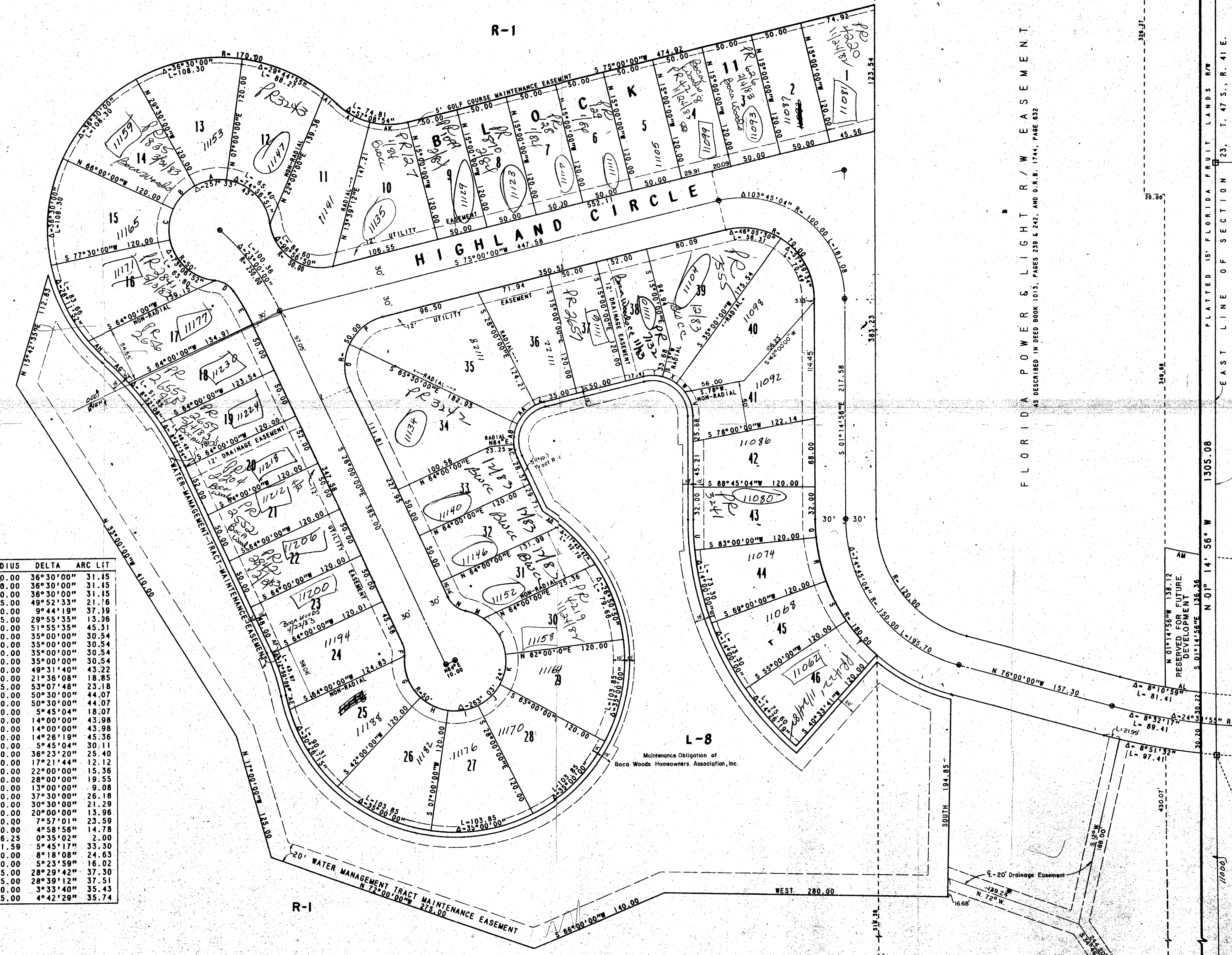
ALL DISTANCES SHOWN ALONG CURVES ARE ARC LENGTHS, AND LINES THAT ARE DRAWN AS RADIAL LINES ARE RADIAL TO THE STREET CENTERLINE UNLESS NOTED OTHERWISE.

□ - INDICATES PERMANENT REFERENCE MONUMENT

⊙ - INDICATES PERMANENT CONTROL POINT

CIMARRON SECTION TWO  
PLAT BOOK 32, PAGES 175 - 180

ID	RADIUS	DELTA	ARC	LET
A	50.00	36°30'00"	31.45	
B	50.00	36°30'00"	31.45	
C	50.00	36°30'00"	31.45	
D	25.00	49°52'33"	21.16	
E	220.00	9°44'19"	37.19	
F	25.00	29°55'35"	13.06	
G	50.00	51°55'35"	45.31	
H	50.00	35°00'00"	30.54	
I	50.00	35°00'00"	30.54	
J	50.00	35°00'00"	30.54	
K	50.00	35°00'00"	30.54	
L	50.00	49°31'40"	43.22	
M	50.00	21°36'08"	18.85	
N	25.00	53°07'48"	23.18	
O	50.00	50°30'00"	44.07	
P	50.00	50°30'00"	44.07	
Q	180.00	5°45'04"	18.07	
R	180.00	14°00'00"	43.98	
S	180.00	14°00'00"	43.98	
T	180.00	4°26'19"	45.36	
U	300.00	5°45'04"	30.11	
V	40.00	36°23'20"	25.40	
W	40.00	17°21'44"	12.12	
X	40.00	22°00'00"	15.36	
Y	40.00	28°00'00"	19.55	
Z	40.00	13°00'00"	9.08	
AA	40.00	37°30'00"	26.18	
AB	40.00	30°30'00"	21.29	
AC	40.00	20°00'00"	13.96	
AD	170.00	7°57'01"	23.59	
AE	170.00	4°58'56"	14.78	
AF	196.25	0°35'02"	2.00	
AG	331.59	5°45'17"	33.30	
AH	170.00	8°18'08"	24.63	
AI	170.00	5°23'59"	16.02	
AJ	75.00	28°29'42"	37.30	
AK	75.00	28°39'12"	37.51	
AL	570.00	3°33'40"	35.43	
AM	435.00	4°42'29"	35.74	



FLORIDA POWER & LIGHT R/W EASEMENT  
AS DESCRIBED IN DEED BOOK 1013, PAGES 239 & 242, AND O.R.B. 1744, PAGE 032

0215-306

4/03

BOCA WOODS COUNTRY CLUB  
PHASE 3B  
RECORD PLAT

FP 1156 3 3